



HYBRID
STRUCTURES INTERNATIONAL Ltd.

The Leader in OTG Structures & Systems

Less Energy More Life

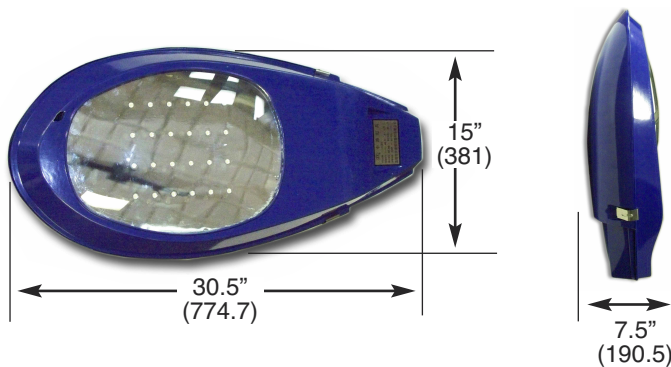
Solar LED Street and Area Lighting

Beacon Series Lamp Head

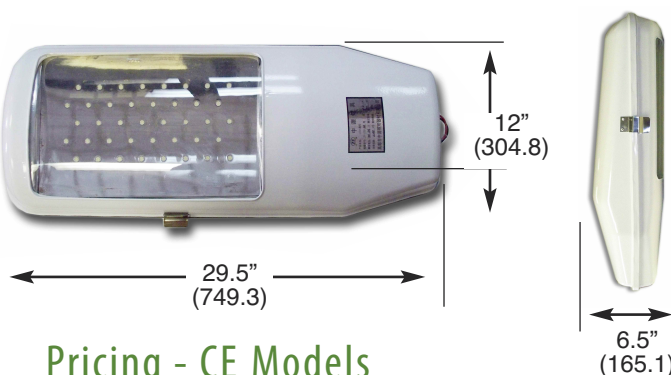
Features & Benefits

- Reliable, proven solar power allows these systems to be installed virtually anywhere.
- Simple, maintenance free systems for years of worry free service.
- Adjustable light timer adjusts to site specific needs.
- Low power consumption provides major energy savings.
- Colour temperature is night vision friendly.
- Super intensity white LEDs offer 50,000 hour lamp life.
- Solar powered DC or (optional) AC operation for any application.

Beacon CE-A30, CE-A40, CE-A50



Beacon CE-B30, CE-B40, CE-B50



Version _04_110810 LED STREET LIGHTS

Specifications: CE Series

Power Consumption(W)	30	40	50
Input Voltage(V), DC	24	24	24
Luminous Flux, lm	3000	4000	5000
Power Factor(PF)	0.85~0.95		
Working Temperature, °C	(-)45~(+)55		
Lampshade Material	Tempered Glass		

Pricing - CE Models

Complete Lamp & Pole Assembly

Lamp Head, lamp arm, pole, solar panel and bracket, micro controller, battery storage.

FOB - Ottawa, Ontario.

50 Watt (= 5000 lm) - **\$3995.00**

40 Watt (= 4000 lm) - **\$3945.00**

30 Watt (= 3000 lm) - **\$3945.00**

Installation Services

To be priced according to a site assessment.

Complete Lamp Assembly - No Pole

(ie. mounted on existing poles or other structures)

Lamp Head, lamp arm, solar panel and bracket, micro controller, battery storage.

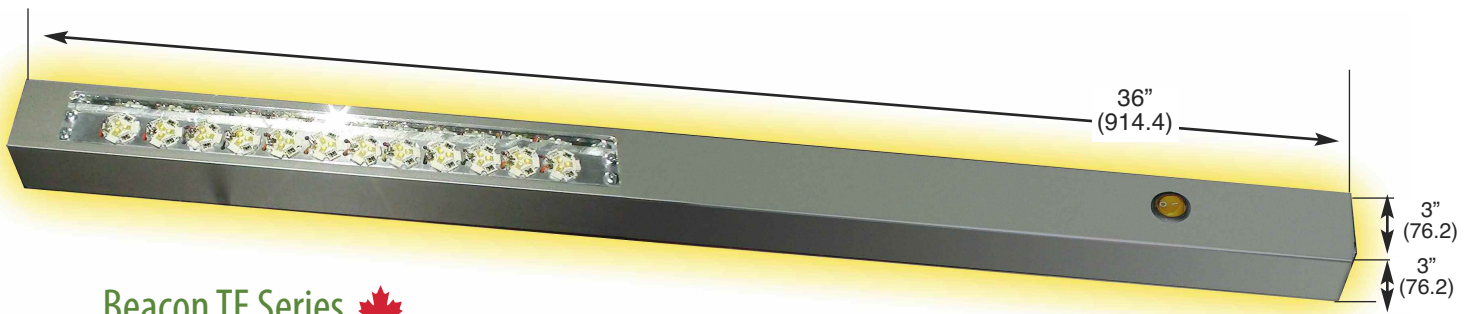
FOB - Ottawa, Ontario.

50 Watt (= 5000 lm) - **\$3595.00**

40 Watt (= 4000 lm) - **\$3545.00**

30 Watt (= 3000 lm) - **\$3545.00**

Volume discounts will apply. Taxes apply to all pricing.



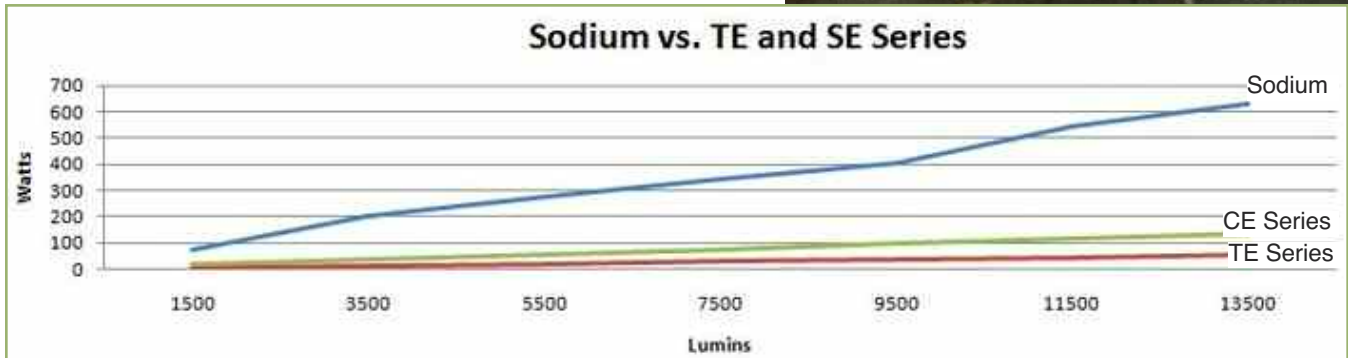
Beacon TE Series

Specifications: (TE model is Canadian Made)							
Power Factor(PF): 0.85-0.95		Working Temperature: °C(-)45-(+)55			Lampshade Material: Tempered Glass		
Model Number	TE-7	TE-14	TE-20	TE-30	TE-38	TE-45	TE-52
Power Consumption(W)	7	14	20	30	38	45	52
Input Voltage(V), DC	24	24	24	24	24	24	24
Luminous Flux, lm	1500	3500	5500	7500	9500	11500	13500
Pricing - Supply Only (includes 1 Lamp Head, lamp arm, pole, solar panel and bracket, micro controller, battery storage. FOB - Ottawa, Ontario.)	\$5,395	\$5,795	\$6,195	\$6,595	\$6,795	\$6,995	\$7,195
Pricing - As above but no pole. (application - mounted on existing poles or other structures)	\$4,995	\$5,395	\$5,795	\$6,195	\$6,395	\$6,595	\$6,795

Additional Specs

- Solar Module: high-efficiency monocrystalline silicon, 25-year lifetime.
- Light Source: LED lamp with high-illumination, 50,000-hour lifetime.
- Storage Battery(s): maintenance free and five-year warranty.
- 3 Way Solar Charge Controller: control by microcomputer, time control, or light control.
- Light Post: varying sizes, common steel galvanized and plastics coated.
- Other Parts: cable, supports, screws, etc.

Configuration of Street Light Systems are based on average available sun light versus lighting requirements.



Homes ~ Cottages ~ Cabins ~ Shelters
 Renewable Energy Systems ~ Wind ~ Solar
 Rapid Build Solutions
 Design and Build Services
 Windows ~ Doors ~ Solar Hot Water Heating


HYBRID
 STRUCTURES INTERNATIONAL
 The Leader in OTG Structures & Systems

www.hsil.ca
 Tel: +1.613.726.6673

101- 6 Bexley Place, Ottawa, ON Canada K2H 8W2
 Fax: +1.613.726.6671